

A scenic view of a canal with a boat and a bridge. The boat, named 'TOSIAS TESSOP', is a narrowboat with a white roof and red sides, carrying two people. It is positioned under a metal bridge with railings. The canal is surrounded by lush green trees and vegetation. The water is calm, reflecting the surrounding greenery.

WEY & ARUN

Quarterly Magazine of the Wey & Arun Canal Trust

Issue 172 September/October/November 2015

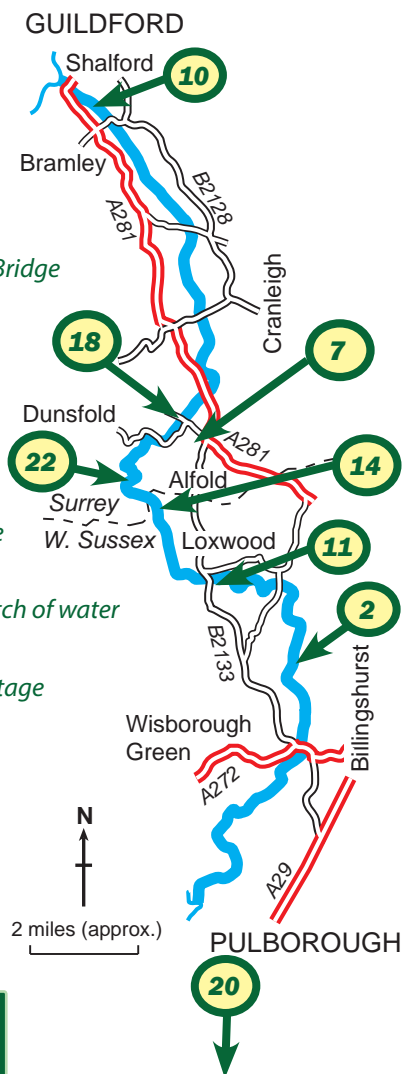


Above: Sally Schupke shows off the Trust's new displays at Amberley Museum & Heritage Centre. A grant from IGas Energy plc financed two new giant boards and member Diana Briault painted the canal figures. Below: Name that bridge! Give yourself a bonus point if you identified Bignor Bridge, restored by the Trust in the mid-1990s and only just over one canal mile from Drungewick, but not easy to reach. (Dave Verrall)



Contents

- 4 Trust News**
Great progress on all key sites
- 5 Celebration for 3000th member**
Lord Egremont hosts a presentation at Petworth House
- 7 Autumn Meeting**
At Alfold Village Hall - close to Compasses Bridge
- 10 Hunt Park Viewing Platform**
Official opening before our Autumn Meeting (pictures on page 12)
- 13 WACT Summer Camp**
Volunteers help out on Summit Level
- 14 Gennets Bridge Lock**
Construction finally starts at key Sussex site
- 16 VIP Visitors at Loxwood**
Famous boating couple explore a new stretch of water
- 18 Compasses Bridge**
Another key site reaches the construction stage
- 20 Poddle 2015**
Excellent weather and plenty of walkers
- 22 A visit to Sidney Wood**
WRG BITM at Lock 16
- 24 Working Party Roundup**
The latest reports from the front line



Loxwood (The Granary) Mon-Fri 9.30am-1.30pm
01403 752403 (office@weyandarun.co.uk)
Website: www.weyandarun.co.uk

Shalford Office Mon-Thurs 8.30am-12.30pm
(visitors by appointment only)
01483 505566 (support@weyandarun.co.uk)

Wey-South team: Julian Morgan,
Geoff Perks (proofreader),
Geoff Thomas, Bill Thomson
(Restoration Roundup)

Front cover: The evening light catches Timothy West and Prunella Scales
crossing Drungewick Aqueduct on board Josias Jessop. (Dave Verrall)

Trust News

It has been an exciting Summer for the Trust, with plenty of activity on all three key sites. From north to south:

- The Hunt Nature Park Viewing Platform in Shalford is complete and will be officially opened on our Autumn Meeting day (24th October).
- Our contractors are on site at Compasses Bridge, Alfold, building the new canal bridge; you will be able to see their latest progress if you come to the Autumn Meeting.
- After frustrating delays, our contractors have also starting building the shell of Gennets Bridge Lock, near Loxwood and Ifold.

These major projects are far from the only activity on the canal route, as you can read in this issue.

Our reconvened Annual Meeting on 13th August approved the 2014 Report and Accounts, an action which had to be held over from April. This represents a huge amount of behind-the-scenes work by Chairman Sally Schupke and others. We have to recognise that it is no longer realistic to rely on volunteers to do all the Trust's financial administration work. Colin Millsop has been helping us (on a paid basis) since the start of the year but his other commitments do not allow him to give us the amount of time we need. By the time you read this issue of *Wey-South* we hope to have appointed a new Financial Administrator. Colin will continue with some tasks on a transitional basis.

W&A Enterprises Ltd

As I write it is nearly the end of July, and we in the Boat Group are in full swing. Indications are that everything is heading for another bumper season. Public trips, charters and Special Events are all up on this time last year.

But (there is always a but) we are keeping our fingers very firmly crossed on water levels. We have had a sustained period of little rainfall and that causes the river levels to fall. That

means we reach a point when we no longer are allowed to pump water from the Lox and the Arun, which in turn starts to restrict our operating ability. We have many thousands of pounds tied up in advance bookings and we do not want to have to give it back because we don't have enough water to run the boats. The heavy rain at the end of July was welcome but we need more.

As we reported in the last edition of *Wey-South*, Dusty Miller stepped down after 16 years of service as Chair of WAEL. Dusty's health is continuing to improve and he is looking forward to attending board meetings again.

We have injected some 'new blood' into the WAEL board with the appointment of Mark Eyre and Martin Smithers. They both have been very active in the training of new recruits this year to ease the burden on the long-suffering Pat and Kevin Crawley. It has been encouraging to see the fall-out rate of new recruits drop this year so we have now got over 100 skippers and crew on the list. However, that hasn't stopped our dedicated band of crew coordinators sending out desperate e-mails asking where everyone is and why are they not volunteering. We have maintained our 100% record of never having to cancel a charter owing to lack of skipper or crew. (We got close a few times, though!)

Most of our Specials are a sell out weeks before they happen. The Cream Tea cruises are particularly liked. Unfortunately, as in most areas, it falls to a very small band of dedicated catering staff to make these events happen. I know that the chair of the Special Events committee, Jonathan Mitchell, would pay tribute to Wendy Hill who is one of the linchpins in this area.

So, weather and rainfall permitting, we look forward to another great year for showcasing the work of the Trust in its restoration of the Wey & Arun Canal.

Derek Heath
Chair, WAEL

Lord Egremont welcomes our 3000th member

On 29th May our President, Lord Egremont (centre of picture), kindly hosted a small ceremony at Petworth House to mark Roy and Caroline Tanner becoming our 3000th (and 3001st) members. Lord Egremont presented a commemorative membership certificate to Mr & Mrs Tanner. A small glass of English champagne-style wine from a nearby vineyard helped the event go with a fizz. Roy Tanner, who lives in Dorking, is a retired BT engineer and driving instructor - he joined the Trust after visiting the Loxwood Canal Centre earlier in the year and is now doing occasional stints as a volunteer behind the Canal Centre counter.



Our Restoration Fund

Knowing how much money is guaranteed to come in over the year helps the Trust plan its increasing restoration workload. We do have assured sources of finance but most of our income is from donations, legacies and grants which cannot be predicted. This means our annual bank balance can be uncertain and we cannot know exactly how much can be done on the canal.

The most-predictable source of money is subscriptions from our 3,000-plus members, but this is mainly allocated for administration and communication costs, including paying for *Wey-South*. We can also calculate how much will

The Quarterly Magazine of

The Wey & Arun Canal Trust

Registered Charity no. CC265331

The aim of the Wey & Arun Canal Trust is the preservation and restoration of the former inland waterway route between the Rivers Wey and Arun, with a view to reopening this to navigation.

All communications and copy either by post to:

Wey-South, Wey & Arun Canal Trust
The Granary, Flitchfold Farm
Loxwood, Billingshurst
West Sussex
RH14 0RH

Or email to:

weysouth@weyandarun.co.uk

Address changes, non-delivery, etc: please notify the Membership Secretary at the Loxwood Office address or email to:
membership@weyandarun.co.uk

Material published in *Wey-South* represents the views of the contributors and should not, unless specifically indicated, be assumed to be the policy of the Trust.

© 2015 The Wey & Arun Canal Trust Ltd

The next issue will be published in the second week of December 2015. Please submit copy by the end of October.

If at all possible please email copy by attachment in Microsoft Word format. Typed copy is also acceptable. Photos are always welcome – prints or hi-res digital please.

Issue 172

**September/October/November
2015**

be contributed from the Numbers Game and direct debits made on Localgiving.com for initiatives such as Grow Your Tenner. These are valuable contributors of income and our thanks go to those who donate in these ways.

But there is another valuable source of money which WACT members may not know about, the Restoration Fund, which we would like to build on as the number of concurrent projects increases. We are most grateful to the 87 people who make monthly contributions to the fund, which currently brings in around £9,000 a year. Some members have been making generous donations for many years.

Giving regularly in this way means the Trust can have some confidence in planning its projects, the biggest of which at the moment is centred on Compasses Bridge on the Summit Level. We have raised more than £430,000 of the £700,000 needed to complete the work, with some way still to go. The Gennets Bridge Lock and Bramley Link projects are also under way and others are in the pipeline, so the demand for large amounts of money will only increase.

We are, of course, continuing to apply for – and sometimes receive – grants from various organisations, particularly for the Compasses Appeal, but an increase in secure income would make life easier for our project planners.

Volunteer fundraiser Margaret Jack would be delighted to hear from members who would like to make regular contributions to the Restoration Fund. Contact her on e-mail at margaret_jack@weyandarun.co.uk, or via the Shalford Office (details on page 3).

Rob Searle

Grow Your Tenner 2015

Grow Your Tenner (GYT) returns in October, giving the Trust another chance to gain valuable matched funding from Localgiving.com. A magnificent total of £8,205 was paid to WACT under last's year's GYT initiative. This includes one-off donations and supporters' six-monthly contributions, plus

£10 matched funding for each donation from Localgiving.com and reclaimed tax in the form of Gift Aid.

Our bank account was regularly topped up after GYT started in October last year, when a £500,000 funding pot was available to charities registered with the website. 59 members and supporters gave to WACT through monthly direct debits. Most of these qualified for six months of £10 matched funding and also gained us extra funds with £2.50 Gift Aid for each tenner donated. Others made one-off donations of £10 or more before the funding pot ran out; each gained a £10 topup and also benefited from Gift Aid. There were several generous donations of £100 and one of £500.

With the money raised through Localgiving.com's Triple Tenner Tuesday in December and its two #GiveMe5 days in January and February, WACT has raised more than £13,095 through donations via the website since the beginning of August 2014. Our grateful thanks go to everyone who has made a donation on Localgiving.com, at a time when we are stepping up fundraising as restoration projects increase.

The 2015 Grow Your Tenner initiative launches at 10am on Tuesday, 13th October. Localgiving.com will be matching one-time donations pound-for-pound by up to £10 and monthly donations up to £10 a month for three months. Reminders will be sent out by e-mail and on our website in good time to encourage people to sign up for this year's campaign.

Rob Searle

Legacy

The Trust is extremely grateful to former member Charles Ledden of Billingshurst who joined in 1974 and left us a legacy of about £5,900.

Autumn Meeting 2015

An Extraordinary General Meeting of the Wey & Arun Canal Trust Ltd will be held on Saturday 24th October 2015, at Alfold Hall, Dunsfold Road, Alfold, GU6 8JB, starting at 2.30pm.

This meeting will follow the official opening of the Hunt Nature Park Viewing Platform at Shalford. Full details will be found on p10 of this issue. This is your opportunity to hear the latest progress on the canal's restoration, including update reports on Gennets Bridge Lock, Bramley Link and the Hunt Park, Compasses Bridge and the Summit Level. The business part should not last more than 30 minutes, giving plenty of time for discussions and chat about canal matters.

Following the meeting and update talks there will be an opportunity to view construction progress at Compasses Bridge.

Agenda

1. Apologies for absence (see note 1 below).
2. To confirm the Minutes of the 42nd Annual General Meeting held on 18th April 2015. (See note 2 below).
3. Chairman's Report.
4. Financial Report.
5. To present the Poddle Trophies.
6. W&A Enterprises Ltd – there will be a report on the Company's recent activities.
7. Next Meeting. To confirm the date of the Annual General Meeting for 2016. Proposed to be 23rd April 2016 at Billingshurst Village Hall.

Notes

1. If you wish to send apologies for absence, please notify the Hon. Sec in advance of the meeting.
2. If you would like a copy of the Annual Meeting Minutes in advance of the meeting, please contact the Hon. Sec.

**Tony Tyrrell (Honorary Secretary,
Wey & Arun Canal Trust)**
sec@weyandarun.co.uk, 01483 505566
**Bridge End, Somerswey,
Shalford, Guildford GU4 8EQ**

Alfold Village Hall

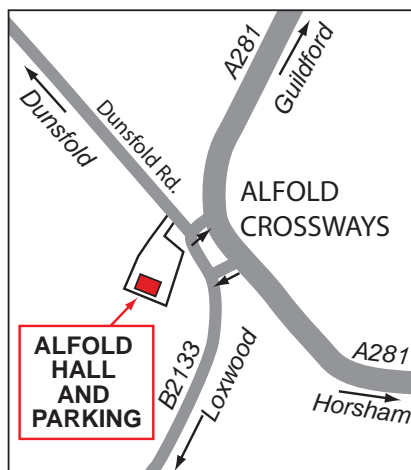
Alfold is about 2 miles south of Cranleigh and about 1½ miles north of Loxwood. The Village Hall is north of the village centre, next to Alfold Crossways, which is the junction of the A281 (Guildford-Horsham) road and the B2133 southward to Loxwood and Billingshurst.

The entrance to the hall is in Dunsfold Road, the minor road leading from the A281/B2133 junction towards Dunsfold. After leaving the junction, the entrance is less than 50 yards on the left.

If you are coming from the A281, take the turning for the B2133, then, instead of turning left towards Loxwood, turn right then immediately left – the entrance to the hall is on the left.

If you are coming from the B2133, follow the Guildford direction until just before you would join the A281, then turn left towards Dunsfold and the entrance to the hall is immediately on your left.

Alfold Crossways is served by Compass Travel bus 42 between Guildford/Godalming and Cranleigh via Dunsfold – for times see www.compass-travel.co.uk or call 01903 690025.



Numbers Game

The first prize in the WACT Numbers Game had gone up to £145 for the July draw, with the total of people holding tickets increased to 57. James Collins, from Lewes, was the month's winner, with ticket number 1. He was one of the first members to join last Summer.

Second prize of £72.50 went to ticket number 4, held by Hazel White, of Rusper – also an early recruit to the competition. The third prize of £36.25 was won by Erika Browning, from Horsham, for ticket number 120.

June results: First – Christopher Rogers of Hambledon (£141, ticket 15); Second – Frederick Partridge of Lancing (£70.50, 76); Third – Richard Wallis of Caterham (£35.35, 29).

May results: First – David Burgess of Ashington (£126, 69); Second – Eddie Fairman of Kingswood (£63, 21); Third – Malcolm and Susan Brenton of Bramley (£31.50, 48).

There is still plenty of room for recruits if you haven't already subscribed. The chances of winning are much better than with the National Lottery and there is no limit to the number of tickets. Members contribute £3 a month by standing order for each number they hold. Numbers Game administrator Rob Searle can send you an application form to subscribe for the first time or even increase your ticket holding.

We recently discovered that some Numbers Game members are not aware of the ticket numbers they were allocated on joining last year. If you are one of these people, Rob can update you. Contact him on e-mail at rob_searle@weyandarun.co.uk, call 01276 857914 or by post via the Shalford Office – address on page 3.

Membership Report

On 21st July, when this copy was submitted, we had 3,002 members. So we are still bumping along at just over the target; new members are only just outweighing those who leave. If you know anyone who would like to join then please point them in the direction of our website, where an application form can be found; they would all be most welcome.

We would like to extend a very warm welcome to the following new members who have joined since the end of April.

Mr Durell Barnes
Mr Michael Berkeley
Mrs Caroline Berkeley
Mr Andy Briggs
Mrs Beverley Briggs
Mr Philip Clarke
Mr Daren Cook
Mrs Claire Cook
Mr John Cottrell
Mr Mark Cullington

Mr Philip Davy
Mrs Sally Foster
Mrs Bunny Jones
Mr Norman Jones
Mrs Hilary Jones
Mr Peter Jones
Mr Philip Knights
Mr Keith Posner
Mrs Sian Posner
Mr Keith Quince

Mr Stephen Reddy
Mr Timothy Sanders
Mr Alan Saunders
Mrs Julie Thackeray
Mr Nick Thorogood
Mr David Ward
Mr Christopher Watson
Mr Richard Williams
Mr John Yeomans
Mrs Annabelle Yeomans

We have learned with sadness of the death of:

Mr John Brodie
Mrs Caroline Greenwood
Mr Martyn House

Mr Clive Morris
Mr Peter Read

Mrs Mary Ringrose
Mr Graham Stenning

Alan Dyer
Membership Secretary
(membership@weyandarun.co.uk)



On Bank Holiday 25th May the Trust was at the prestigious Surrey County Show at Stoke Park in Guildford, with a stand in the Visit Surrey tent.

The invitation to exhibit came thanks to our membership of the Surrey Attractions Group.

Left: Rob Searle (Fundraising and Publicity) shows a visitor the canal route in the Guildford area. Below: Bramley Link Project Manager Philip Oliver explains our plans for the Shalford area.

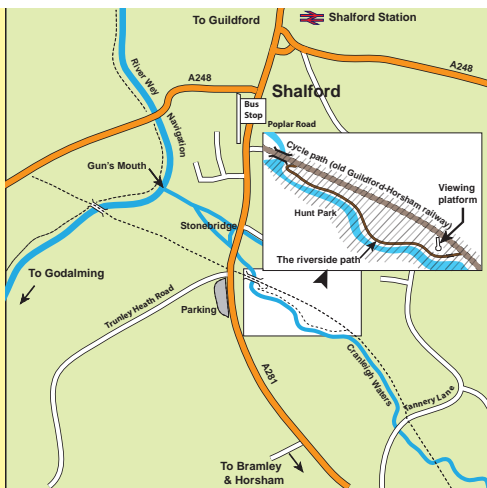


Official Opening of the Wey & Arun Canal Trust's Viewing Platform in Hunt Nature Park

Shalford (near Guildford) - 12 noon on Saturday, 24th October 2015

Public car parking available in the layby at Trunkey Heath Road on the A281.

Overflow car parking will be available on the day, please ask parking marshals or look for the parking signs. Final details will be shown on the website. Toilets and refreshments available. Why not take the opportunity to visit the Bramley Link and walk down to Gosden Aqueduct?



Richard Stephens

Richard is a new Trust director and introduces himself.

After graduating with a Civil Engineering degree from Portsmouth University, my entire career has been spent in the planning, design and construction of port and harbour



facilities throughout the UK and abroad. I first worked for the contractor Taylor Woodrow on the construction of Brighton Marina and after a couple of years moved on to work for a consulting engineering practice based

in Victoria Street, London. This brought me opportunities to gain overseas site experience and I spent four years working on port development projects in a number of Middle East countries including Jordan, Saudi Arabia, Oman and Libya. Through a process of two acquisitions I ended up working for the Mott MacDonald Group, one of the world's leading management and development consultancies, based at the corporate headquarters in Croydon. This gave me exposure to global port development projects and involved me in frequent travel, and occasionally short-term assignments, all over the world and particularly throughout the Caribbean. For the 10 years before retiring in 2013, I undertook the role of Managing Director of the Maritime Division.

I have held an interest in canals for many years and have had many enjoyable family holidays touring the canals in the Midlands. On retirement, and looking for a part-time interest, I noticed that WACT were looking for volunteers to help out on project development. Since January 2014 I have been involved with the Bramley Link project.

Home is in Horsham with wife Lesley. Two sons have moved on, one living locally, with a grandchild on the way, and the second in Seattle, USA.



One of the most frequently asked questions at the Loxwood Canal Centre is "How far is it to ...?" So we decided to invest in a new orientation board that shows the canal route between Gennets Bridge Lock (roughly 1½ miles away) and Long Meadow Winding Hole (just over 2 miles). Geoff Thomas designed the board, the D'Oyly Carte Charitable Trust kindly funded it and the Monday Group installed it on 20th July. (Dave Verrall)



**How far
is it?**

Hunt Park Viewing Platform



Above: the Hunt Nature Park Viewing Platform was virtually completed over the first weekend in June, with the deck laid and the railings put in place. Team leader and chief carpenter George Whitehead (centre) is hard at work.

Below: It's 18th July and a group of volunteers tries the platform out after applying the finishing touches.





WACT Summer Camp

Above: some of the Summer Camp volunteers in the works cabin at Compasses with Site Manager Dave Evans (2nd from left). Below: one of the main jobs for the volunteers was to improve the towpath between Compasses and Farnhurst Bridge, ready for the Wings & Wheels event at Dunsfold Park in late August. The new WACT digger was in use. (Left picture by Steve Melling.)



Gennets Bridge Lock - building starts



Work on site at Gennets Bridge Lock begins in earnest.

Top: removing the sludge from the lock site. (Eric Walker)

Below: Taking advantage of a short gap in their work schedule, our contractors Burras Ltd arrived in early July to complete the "temporary works" piling. This was preparatory work for the main Burras activity, which is the excavation of the lock chamber and installing the reinforced concrete shell of the lock.

This view is looking north towards Sidney Wood. (Janet Phillips)





Above: (20th July) Looking south, the piles are just in front of the concrete strip and you might just see the steel cages in the piles. At the left-hand side is the top sill. The next job is to dig out between the piles to a founding level. The concreting team will then put in a thin layer (75mm) of concrete and then the reinforced concrete lock floor or invert. They will then put in the first section of concrete wall, which will be 2.4m (8ft) high from the invert. In the picture the concrete strip is incomplete; the piling team did it as they had some spare time and the concreting team were due to finish it. (Dave Verrall)

Below left: (31st July) The piles are clearly visible. Below right: (10th August) - pouring concrete using a 50-ton crane. The new bridge will be just behind the photographer.





**Acting
couple visit our
canal**





On 3rd June, acting couple and canal enthusiasts Timothy West and Prunella Scales visited the canal at Shalford and Loxwood. Over a long afternoon and evening, they navigated the whole of the Loxwood section in Josias Jessop. Left top: Timothy West (centre) is in the Canal Centre with Dave Verrall, Lyn Nash and Nancy. Left below: at Southland Lock. Above: in Drungewick Lock and left: heading north towards Drungewick Lock.

Derek Heath, Rod Smith and Rosie Sugar acted as the official boat crew for this trip which should result in some useful publicity for the canal and the Trust.

(Pictures by Dave Verrall and Julian Nowell.)



Compasses Bridge

This page: the start of work to build the new Compasses Bridge at Alfold. Above: Ready for the start of piledriving (16th July) - the green-topped posts show the shape of the bridge (the existing causeway is in the background). Below: preparing for the foundations (23rd July).

Page on right: In the top picture (31st July) two lines of piles are clearly visible. Below left: (10th August) the structure is beginning to take shape, with the first pieces of steelwork in place. Below right: the site from road level with the causeway on the right.







Poddle 2015





The 2015 Poddle on 7th June was a great success, with 142 walkers taking part. Excellent weather, sunny but with a cool breeze, meant near-perfect walking conditions.

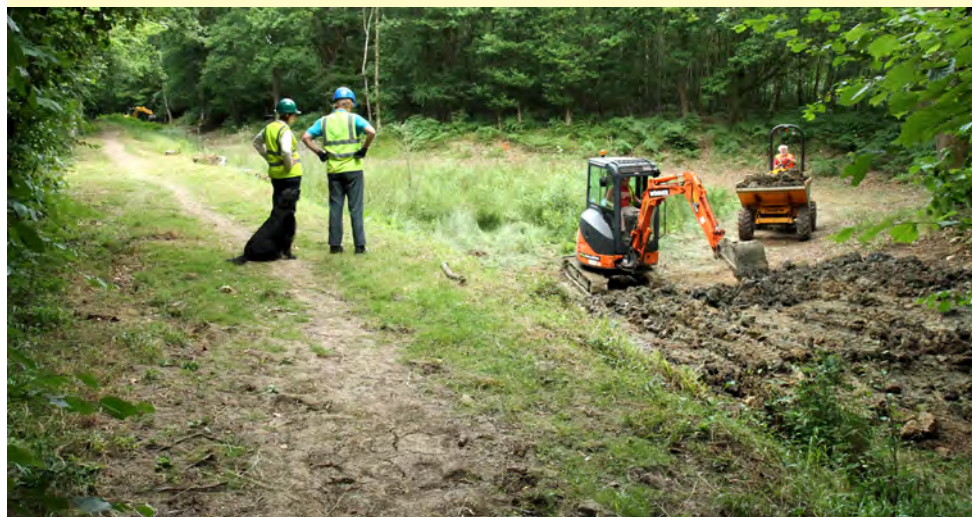
The very scenic route started and finished at St Michael's Church Hall, Amberley, next to the church and castle. Proceeds from the walk are expected to reach more than £8,000.

Left page - Top: after a stiff climb up the main ridge of The South Downs, walkers have reached Refreshment Point 1 and some great views towards Arundel. Centre: lunch was at Warningcamp Heritage Centre at Sefton Place, a former youth hostel. Below: walkers are on the final stretch towards the Arun Valley and Amberley. Above (clockwise from top left): The dining hall at Sefton Place; Kevin Holcombe and the essential lunchtime refreshments; (L to R) Sally Schupke, Poddle organiser Margaret Darvill and Jo Holcombe; St Michael's Amberley; not exactly "boy" scouts. (Pictures by Julian Morgan and Rob Searle)

BITM at Lock 16



Over the weekend of 18/19th July, Waterway Recovery Group Bit In The Middle (WRG BITM) visited the depths of Sidney Wood. The main job was to move the causeway blocking the canal just north of the old winding hole at Lock 16 and construct a new causeway immediately next to the lock site. This is part of a long-term plan for restoration in the area that is being worked up by engineers Tony Ford and Brian King. Above: the old causeway (left: looking south and right: looking north) - the newly acquired WACT digger and dumper were in use. Below: the new causeway is in the right foreground - working party leader Rachel Banyard (in blue hat) and her dog are supervising.





The Thursday and Sunday Group (TSG) has carried out badly needed towpath repairs in the Brewhurst Lane/Birch Copse area at Loxwood.

Above: It's lunch break time aboard work boat May Upton. Below left: Eric Walker supervises the delivery of a load of surface material.



**TSG at
Brewhurst**



Working Party Roundup

Although our own membership contributes arguably the greatest number of man-hours of any of the current waterway restorations, we cannot do it all ourselves. So we are really grateful to our visitors.

Sometimes the home-grown and 'foreign' workers come together successfully – an example being the Summer work camps. The most recent was at the end of July, and made a valuable contribution. The heavy and technical work is done by contractors – that is the quickest and most efficient way of working, and the only way that real progress can be made, to the necessary standards. But volunteers have an important job preparing for the professionals, and finishing off after they have done their heavy stuff. Some of the beautiful brickwork on our locks and bridges is an example of what our skilled volunteers are capable of. And once built, the sites have to be looked after and maintained – another job for the volunteers.

There are many tasks in addition to volunteer navvying of course, but it's the work on the ground that this part of *Wey-South* highlights. You can learn more from the monthly Working Party News, freely available by e-mail as well as through the Trust website. You can subscribe by sending a request to listadmin@weyandarun.co.uk, or, if you want a paper copy, please send a supply of stamped addressed envelopes to the Loxwood Office.

Bill Thomson

Summer Camp

Our 2015 Summer Camp took place on the summit level at Compasses Bridge, from 25th to 29th July, led by George Whitehead. As usual, the planned tasks were changed, and instead of work on the slipway, the campers concentrated on building the western entrance to a new road drain culvert at a point about halfway between the Three Compasses pub and Compasses Bridge. They also

carried out towpath improvements between Compasses and Farnhurst Bridge.

The former task involved casting a thick concrete slab onto which our brick expert Phill Cardy spent three days building a 9in brick wall around the plastic drain culvert. The eastern culvert portal is currently under the



**Phill Cardy and the culvert wall
(Steve Melling).**

road and will be built next Spring. The towpath job included three days' work put in by Dave Evans and Pete Bunker in constructing a temporary road access from the security cabin down to the towpath and past the landing stage back to the causeway, to serve as access for the towpath improvement material. It will be useful too when removing the causeway material next Summer. The towpath works were completed by Tuesday afternoon after which the team moved to the Wey-South Path through the caravan park where some boggy sections were cleared out and resurfaced.

We welcomed a number of past and new volunteers - many of whom are local and we hope to see them back on the regular working parties - thanks to them all.

Thursday and Sunday Group

Now there's a thing. On 30th July an Ordnance Survey surveyor came on site looking for Gennets Bridge! "Well," he was told "come back in a year's time and we will have rebuilt the one removed over a hundred years ago. We have always said maps are always out of date just like there never has been an up to date aeroplane, it's on the drawing board." He reluctantly agreed and said they would be back in five years time to check progress.

At Gennets Bridge Lock (GBL) the Natural England licensed activity regarding protected species continued up to 1st June. The trained and accredited volunteers closely supervised by our ecological consultant attended every day to look for and remove the creatures from within the fenced area. That black plastic fence is to remain intact until the end of the construction to keep the creatures away from the work site. We removed the sludge from the lock site and installed a pump to keep the water level down. There was then another wait while our contractors found a window of opportunity to come and start work at GBL.

The contractor's piling team started mobilisation onto the site on 26th June and started work on 29th June, drilling the holes for the 166 6-metre (19 ft) long reinforced concrete piles. With all the preparations done by the TSG (Thursday & Sunday Group) volunteers the piling job should have been straightforward. Well it was, except in places where there was a 225mm (9in) layer of very hard stone about a metre below the ground. They took this in their stride and finished early. The piles were not part of the structure – they are there simply as "temporary works" to protect the workers when the lock is dug out and they will be left in after the lock is constructed.

The other item to note, and admire, is that the original lock builders had to remove the stone, which was difficult even for the 21-ton excavator. The stone we found in those parts was not originally excavated, our new lock

being wider and longer than the original lock to allow two 72ft (22m) narrow boats in at the same time. The intention is to use the stone on the top training walls. During excavations at both the top and bottom of the lock a thick layer of sandstone was noted.

The contractor's excavation team started on 27th July and their work was completed by 4th August ready for the concreting team to come in. The expectation (on 4th August) is that the contractor could be off the site by mid- September.

Meanwhile the TSG has started towpath surfacing on the first 100m from GBL towards the south. We stopped this work once the landowner put cattle in that part of the farm. So the action moved to Brewhurst Lane on the towpath south from the lane, where work was originally started late last year but was put off due to the typical winter weather, to be resumed at a suitable time this year.

The tilting bucket on the 13-ton CASE excavator is a great asset to our work. However recently we had a major problem when a swivel pin came out from the bucket, causing the hydraulic rams (which are about 2in diameter) and the mounting plate (about 1in thick) to be bent. Fortunately our friends at BPH Plant Hire in Billingshurst were able to repair the machine.

Ash dieback is occurring at lot at GBL which is a shame when we have tried to work around the trees and they are such a feature of the canal.

**Contact Eric Walker, 07717 855340,
tsg@weyandarun.co.uk**

Hedgelaying Group

The summer months mark a break from hedging activities, but the group expects to be resuming work in September. Last job before the summer recess was completion of the mostly hazel hedges at the slipway near Drungewick, the final 40 yards presenting quite a challenge thanks to the steep slope.

We ended with a tidying-up session, and removed surplus saplings from Brewhurst to grow on for future hedge infill. Thanks to all who helped on site this season.

**Contact Keith Nichols, 01403 753882,
(hedging@weyandarun.co.uk)**

Summit Working Party

This is a comparatively new addition to the impressive list of regular Wey & Arun working parties, with a regular slot on the third Saturday of each month. Recent jobs included cutting half-bricks ready for when bricklaying at Compasses Bridge starts later in the year, and building shuttering boxes ready for the slipway work. An impressive start, but the group would welcome more volunteers.

The group found time to help out at Hunt Park with the finishing touches to the viewing platform, installing the remaining deck planks leading up to the cycle way, sanding down the timber side and top rails and gluing rubber strips onto the projecting steel bases, all that remains is to fit the central hard wood hexagon.

**Contact Dave Evans,
(compasses@weyandarun.co.uk)**

Midweek Working Party

Following a period under the temporary leadership of David Daniels (to whom many thanks) MWWP now has a new leader, Margaret Darvill, who would be pleased to welcome more volunteers.

Much of the recent work has been on 'project' clearances – i.e. areas which we have been given permission to clear in support of ongoing projects. For example, we worked on the offside bank at Compasses, below the Mobile Home Park, and then at Hunt Park, firstly near the new viewing platform and then across the other side of Cranleigh Waters. In both cases there were more than 15 volunteers doing the back-breaking job of pulling Himalayan balsam, as well as removing the inevitable old tyres and beer cans.

An interesting task was helping to dig out some trial pits at Whipley to see what remains

of the old railway bridge – the answer is a bit more than expected. Other tasks included clearance south of Run Common Road, preparation at Shalford for the visiting navvies' final push on the viewing platform, and another visit to Fast Bridge. Moving south to Drungewick, the group cleared reeds from the canal and trimmed the overhanging trees and branches on the off side, which has created a wider navigation channel and a better view for the boat passengers.

**Contact Margaret Darvill, 01483 894606,
(margaret_darvill@weyandarun.co.uk)**

Monday Group

The group meets mostly twice a month, on the first and third Mondays (not every Monday as optimistically suggested in the last issue).

We have visited plenty of sites during the last quarter, starting with continuation of the winter job at the Lock 16 winding hole. Although much of the work is done by hand, we do have some useful machinery, not least 'Martin's monster mower'. This came into its own between the 90-degree turn in the canal north of Haybarn to Lee Farm Lock, cutting all 1,500 yards in about two hours, a task which would have taken us at least two full days with trimmers and ordinary mowers.

We paid the first of many expected visits to Southland Lock, removing debris, including a very large log, from the lock chamber. This is to be yet another regular site for the group.

Such was the workload that we met three times in June, in order to include a tidying-up visit to Malham Lock. We managed two visits to the former slipway site at Barnsill Bridge, cut the grass at Brewhurst and Baldwin's Knob Locks and cleared the towpath between Compasses and Farnhurst Bridges.

July saw us back at the winding hole above Lock 16 in Sidney Wood in preparation for one of our visiting groups, and then we were back to the Haybarn Swing Bridge stretch to cut the hedge. We also had time to install a

new orientation board by the Canal Centre in Loxwood.

**Contact John Empringham, 01483 562657,
(mondaygroup@weyandarun.co.uk)**

Visiting Groups

Our visiting groups have continued to put in valuable efforts at the Hunt Park viewing platform including an extra two days by George Whitehead and Andy Evans in advance of the rest of the volunteer team arriving on the Friday. We had teams working simultaneously on the cladding, decking, top and side rails. We kept running out of materials - notably the stainless steel bolts that held all the rails together - with regular trips to Screwfix to replenish. Annoyingly, but perhaps predictably, we ran out of decking planks with only about one metre of the walkway to

this very attractive length of the summit. The group also investigated the work needed to prevent leakage - particularly around the spill weir - and carried out towpath improvements. BITM seems to specialise in the one-off tasks and we will welcome them back in October to Whitley Manor Railway Bridge for some further exciting exploratory work.

**Contact Bill Nicholson, 01844 343369,
(bill@nwpg.org.uk)**

Tickner's Heath Depot

The evenings are beginning to draw in and the Summer has almost gone - that is if it arrived in the first place - so what have that lot at the bottom end of the airfield been doing you ask.

As we seemed to be going through a bit of a lean spell workwise the team took advantage of



Action everywhere as the Hunt Park Viewing Platform nears completion in June.

go, so more were ordered for the next visit. The visitors finished the cycle stand fence and generally landscaped and tidied up the area, so all will be done in plenty of time for the October opening event. The platform has taken about 90 man days of volunteer time to build, equivalent to about £20,000 worth of paid labour.

WRG BITM came to Sidney Wood in July, and spent the weekend moving the causeway to the north of the spill weir to a new position at the head of Lock 16 with the aim of rewatering

the time to reduce the amount of vegetation at the depot, but for every nettle, weed or blade of grass we cut another two seemed to grow in its place, but it was effort well spent and the depot does look better for it.

With the resumption of the recycling contract Dave Kersley put in a superhuman effort and reduced the paper mountain at Cactus Farm over a thousand bundles to nil and then moved them to the skips at Loxwood and Squires. He even helped the owner out by making shelves for her plants - mind you he

got a bit of a wiggling when he put them back in the wrong order. The female stare is enough to put fear into any man. But well done Dave.

Mike Davison kept us busy earlier in the Summer with a regular stream of mowers and outboards (well one at least). Unfortunately some of the mowers required quite a bit of work before they could be returned to Mike so he had to buy a new mower to keep the grass down along the towpath. The outboard proved to be quite a powerful mover once we had given it a service and freed off and repaired the mounting screws. All that was needed was a fuel tank, luckily eBay came to our assistance and one has been purchased which gives us another powerful addition to our stock.

In June we received the donation of a rather old hydraulic capstan which on the surface seemed to have seen better days. Initially we did have difficulty getting the engine to start. We stripped the beastie down to its bare essentials, checked the magneto, etc and cleaned what we could get at. The leads and everything seemed to be in order but still the machine refused to start so we changed the spark plug and - guess what- the thing burst into life. We then connected the hydraulic capstan which proved itself by pulling the Land Rover a considerable distance. We now have an item residing at the depot that may be of use to the Boat Group – any offers?

Other donations include a large unbraked plant trailer and a petrol-driven generator. Even though the trailer being unbraked restricts its use slightly, it is still a handy addition as is the generator and our thanks to those who donated these items.

Just as we were scratching around for things to do along came the Northern Office with a request for items to measure the depth and length of the river at the northern end of the canal. Lengths of rope and a measuring tape were no problem but something graduated to measure the depth of water had the team scratching its collective heads. After a

rummage around the depot a suitable length of aluminium and the innards of a steel tape measure were found (justifying our policy of never throwing much away) and once the tape had been pop-riveted to the aluminium a useable measuring pole had been manufactured. It will save the crew allocated the task swinging the lead and calling out "by the deep six", I suppose.

**Contact John Smith, 01903 235790
(depot@weyandarun.co.uk)**

Recycling Report

After Aylesford Newsprint went out of business we had a period where none of our bins were being emptied. But now I am pleased to inform you all that the recycling is back online with our bins being emptied on a three-weekly cycle. Please continue to support this very good way of raising money towards our ongoing restoring of our lovely Wey & Arun Canal. The quarter ending the 31st March brought in £3317. The quarter ending the 30th June brought in £1171. This lower figure is because for some of this period the bins were not available.

Any bundles of paper must have the ties removed before the paper goes in the bin. Please place the ties in a rubbish bin. On behalf of the Trust, thank you all and please keep recycling. I know that paper is heavy and it's a lot of hard work with the 'letterboxes' in the bins being high up. But your efforts are not forgotten.

Finally please note that the Trust is no longer recycling printer cartridges as the money raised does not justify the effort - the recycling company was actually charging us for some types of cartridge.

**John Taylor-Cram, Recycling Officer
(jtc@weyandarun.co.uk)**

Christmas Dinners

As in most previous years, you have the chance to attend either or both of two festive meals in 2015. On 27th November,

Vanessa Lamey is organising a dinner at the Norfolk Arms in Arundel, where the directors of the Arun Navigation Company used to hold their meetings. The navigation scheme was a bit of a commercial disaster but it sounds as if the dinners were always great fun. If you attend this year's event you will be continuing the fine old tradition, although we're not sure what the Arun Navigation Company top brass would have thought of the flying balloons - a rather newer tradition.

The Northern Dinner is at the Jolly Farmer, Bramley, on 4th December. This pub has no canal-related history that we know of but is nonetheless warm and welcoming; no-one that we know of has complained at feeling hungry after one of these events.

Full details of both dinners are enclosed with this issue of *Wey-South*. Please note that, for uninteresting reasons involving VAT, the Trust is promoting the dinners on behalf of the organisers, not organising them itself.

Walking the canal for Help for Heroes

Doug ('Monty') Hamilton-Cox is on a mission to walk the country's canals

to raise money for Help for Heroes. Doug gave himself just two days to cover the route from Guildford to Amberley. At Shalford Doug called into the Northern Office where he picked up a copy of the *Wey-South Path Guide* (with the Trust's compliments). Alan Johnson and David Daniels were on hand to point out the way southwards. It was easy going as far as Run Common, then Doug had to take to the roads for a short sections and commented that "every driver seemed in a huge hurry to get to the next world". After Sidney Wood he was at last able to admire some major restoration

Annual Raffle

If you receive a paper copy of *Wey-South* and you have not opted out of receiving draw tickets, then two books of raffle tickets with a total value of £10 are enclosed. The Annual Raffle is the Trust's second most important regular fundraising event (after the Poddle); last year members and supporters kindly added over £4,000 to our funds.

This year there are more prizes and the prize fund has been increased, thanks to generous sponsors. A sponsor also donates the cost of printing the tickets, so nearly all the proceeds from the raffle go directly to the Trust.

Some members are kind enough to add a donation when buying raffle tickets. If you are one of these members then please ensure you complete the enclosed Gift Aid form (if you pay tax) so that we can reclaim tax on your donation.

work before reaching Loxwood (16 miles on day one).



The next day, Dave Verrall met Doug at the Canal Centre and took the picture included here. Doug left the canal at Drungewick Aqueduct but was pleased to rejoin it at Loves Bridge. He paused briefly at Northlands Lifting Bridge, then enjoyed stopping for a few minutes at Lordings Lock where he found the waterwheel intriguing. People tend to comment that at least the canals are flat but that wasn't Doug's experience

as he took the diversion uphill and via the road to Pallingham. Doug found the portal of Hardham Tunnel hidden in the undergrowth and took a quick look at Greatham Bridge but wished he had more time. When he read about the path across Amberley Wild Brooks he had to smile as this "clear path" was very well disguised as a dense reed bed, but Doug

What a lovely day.....

The popular song of yesterday proclaims that "If you want a cathedral we have one to spare..." If you'd rather settle for a narrowboat and have resources to match, Braunston



Marina has some attractive samples on offer. That, however, was unlikely to be the prime motivation for the coach party that sallied forth, early on 27th June, from West Sussex and Surrey to experience the 2015 Fellows, Morton & Clayton Ltd Rally & Canal Festival.

Mark Anderson, coach driver and WACT member, effortlessly managed the M25, on a day when it was relatively playful, before launching us on to the spectacular scenery of the M40 and ensuing rural roads to Daventry in Northamptonshire. The weather was warm and pleasant.

Centred on Braunston Marina, at the junction of the Grand Union and Oxford Canals, the Rally & Festival has been an annual event since 2003 and attracts huge interest. It features trade

is jungle-trained with a keen eye so easily detected the occasional half-buried lesser spotted duckboards that marked the route. Exhausted but happy, Doug was thrilled to find his support team (Sue) had beaten him to the Bridge Inn at Amberley. The second day was a gruelling 20 miles.

exhibitions (custom-built canal boat stoves is an example) art and craft displays, myriad canal societies, food and drink outlets and the more usual setups of vintage technology.

A Morris dancing team entertained at intervals.

Prunella Scales and Timothy West, famous as actors and renowned as canal enthusiasts, had opened the festival in 2013. They were welcome again, with a film crew in attendance.

The procession of historic narrow boats was staggeringly impressive; because of the numbers taking part (more than 80), the care that had been lavished upon the craft and the supreme skill

demonstrated by the crews in manoeuvring the vessels in a very tight figure of eight circuit through the marina. In pride of place was *President*, the last surviving steam working narrowboat, as she excitedly chuffed up and down with her buttty *Kildare* in tow. Survivors from the Fellows Morton & Clayton fleet, several predating the First World War, showed off their finery and the consummate skills of their crew.

Whilst some of the coach party decided to amble along the Grand Union to the Braunston Tunnel and perhaps into the little village of Braunston, others tracked the other way through the canalside crowds to the actual junction of the two canals and relative quiet. Those who chose to walk to Braunston Tunnel found the towpath rather more challenging;

very muddy and in poor condition. The tunnel was constructed under the direction of engineers, William Jessop [*father of Josias - Ed*] and James Barnes in 1793. It is 2042 yards long, 15¾ feet wide and 12¼ feet high.

Uneventfully retracing our route and home again, the recollection that comes to mind from a children's book of many years ago is "What an awfully big adventure! What a lovely day..."

Very many thanks to Mark and to Roadmark.

[Mark tells us there were 46 people on the trip.]

Erik Shopland (who also took the picture)

Alfold Postcard

We are grateful to members Steve Jones and Roger Nash who both suggested that the postcard reproduced in the June 2015 issue of *Wey-South* could have shown Fast



Bridge before the current Guildford-Horsham road (now the A281) was built. Fast Bridge is not a perfect fit but no other canal location in the area had a bridge and a house in the right position. If Steve and Roger are right, the

artist moved the house closer to the bridge than in real life. Roger says he has tried to identify some "Rudgwick" postcards by the same artist and concluded that his grasp of geography was rather shaky.

Dates for your Diary

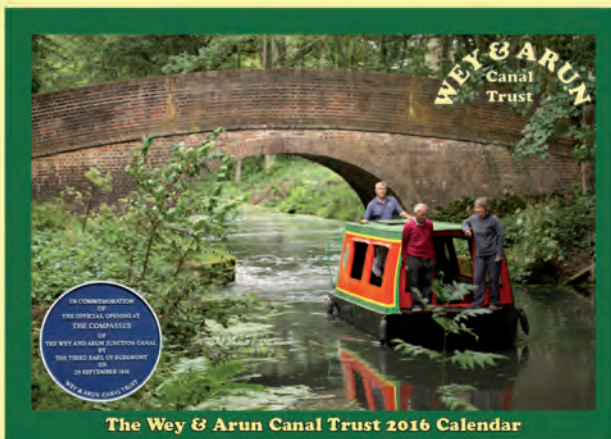
Saturday 24th October	Official Opening of Hunt Nature Park Viewing Platform at 12 noon. Details on page 10. Autumn Meeting at 2.30pm in Alfold Village Hall (full details on page 7).
Saturday 31st October	Halloween Spookerama boat trips from Loxwood at 4.30pm (1¼ hours) and 7pm (1½ hours). Booking essential. For more information and bookings contact the Loxwood office (details on page 3).
Friday 27th November	Christmas Dinner at the Norfolk Arms, Arundel. Full details enclosed with this edition of <i>Wey-South</i>.
Friday 4th December	Northern Christmas Dinner at the Jolly Farmer, Bramley, Surrey. Full details enclosed with this edition of <i>Wey-South</i>.
Sundays 6th, 13th and 20th December, Monday 21st, Tuesday 22nd and Wednesday 23rd December	Santa Cruises from Loxwood at 11am, 12 noon and 2pm. Booking essential. For more information and bookings contact the Loxwood office (details on page 3).
Saturday 26th December	Boxing Day Boat Trips from Loxwood. 11am, 12 noon and 2pm. Booking is possible with the Loxwood office, but not essential.
Friday 1st January 2016	New Year's Day Boat Trips from Loxwood. 11am, 12 noon and 2pm. Booking is possible with the Loxwood office, but not essential.



A reminder of Summer. Top: Zachariah Keppel approaches Brewhurst Bridge on a special birthday charter trip while Josias Jessop, on another group outing, waits at the start of the "one-way traffic" section (Julian Nowell). Below: Wiggonholt is seen at Southland Lock on the Sunday Outing trip on 7th June (Dave Verrall).



The Wey & Arun 2016 Bicentennial Calendar is now on sale



The Wey & Arun Canal Trust 2016 Calendar



Timothy West and Prunella Scales crossing Drungewick Aqueduct by Dave Verrall

- ★ Large (A4 size) wall calendar
- ★ Features selected pictures of the canal taken by Trust members
- ★ Printed on high-quality paper
- ★ One page for each month with a large box for each date
- ★ Limited edition - order yours now to avoid disappointment
- ★ Supplied with envelope for posting

- ⇒ On sale at the Loxwood Canal Centre (01403 753999, canalcentre@weyandarun.co.uk, Tues & Thurs 1-5pm, weekends 11am-4pm until end-Dec).
- ⇒ Or to order by post please contact the Loxwood Office (01403 752403, office@weyandarun.co.uk, Mon-Fri 9.30am-1.30pm) or use the order slip below.

June 2016

Monday	Tuesday	Wednesday	Thursday	Friday	Saturday	Sunday
		1	2	3	4	5
6	7	8	9	10	11	12
13	14	15	16	17	18	19
20	21	22	23	24	25	26
27	28	29	30			

Wey & Arun Canal Trust

www.weyandarun.co.uk

Price: £7.00



To: Wey & Arun Canal Trust, The Granary, Flitchfold Farm, Loxwood RH14 0RH
Please supply ___ Wey & Arun Canal Trust 2016 Calendars at £7.00 each.

Name:

Address:

.....

.....

Please add £3.00 postage for up to 3 calendars - for more than 3, contact the Granary office to confirm postage.
Please make cheques payable to W&A Enterprises Ltd (for card payment, contact the Loxwood Office or Canal Centre).

WEY & ARUN CANAL TRUST

SOUTHERN DINNER, THE NORFOLK ARMS, HIGH STREET, ARUNDEL BN18 9AB

7.30PM FOR 8.00PM FRIDAY 27TH NOVEMBER 2015



MENU

Starter

Roasted Root Vegetable and Pearl Barley Broth (v)
Chicken and Duck Liver Pate, Beetroot and Orange Chutney,
Artisan Bread



Main Course

Roast Sussex Turkey, all the trimmings, Cranberry and Chestnut Stuffing,
Roast Potatoes and Gravy

Supreme of Salmon, Red Pepper, Basil and Tomato Coulis
Baked Flat Mushroom, Roast Peppers and Halloumi Tower, Thyme and
Garlic Dressing (v)

All main courses served with chef's selection of seasonal vegetables and potatoes



Dessert

Traditional Christmas Pudding and Brandy Sauce
Chocolate, Kirsch and Black Cherry Pots
Salted Caramel Cheesecake



Followed by
Coffee and Mints



INCLUDES
CRACKERS
& FESTIVE
NOVELTIES

PRICE: £27.50 PER HEAD

Wine extra, order & pay hotel on the night. Cheques (payable to Mrs V Lamey)
to Vanessa Lamey, 6 Langley Close, Epsom, Surrey KT18 6HG.

Please specify your menu and who you want to sit with when you book. Do book early
(we won't bank your cheque straight away); it makes life extremely difficult both for me
and the hotel if you leave it to the last minute.

Rooms are £70 for a double with breakfast. For this rate book by phone
and quote NORF15303.

Northern Christmas Dinner

Friday, 4th December 2015 at 7 for 7.30pm

at the Jolly Farmer, High Street, Bramley, Surrey GU5 0HB

MENU

You may choose one, two or three courses, and coffee/tea, as you wish. Prices include service.

Starters

Ham hock terrine, piccalilli, warm ciabatta	£5.75
Chestnuts (roasted on an open fire), pomegranate & parsnip salad	£5.75
Mussels & clams, smoked back bacon, champagne cream sauce	£7.25
Pheasant on toast, kale, salsify, beetroot purée	£7.00

Main courses

Roast turkey breast, pigs in blankets, Brussels sprouts, curly kale, cranberries, turkey gravy, cauliflower cheese (*)	£16.00
Vegan nut roast with wild mushrooms (*)	£13.50
Fillet of beef wellington (served pink) mushrooms, foie gras, baby turnips, chestnut purée, rich beef and garlic gravy (*)	£28.00
Baked Scottish salmon fillet 'nut crust' with lobster, baby leek, Clementine purée, champagne beurre blanc (*)	£20.00
Honey & Mustard glazed ham, duck egg, pea purée, mustard frills, chips	£13.00
Chicken, chilli, spiced cheese sauce, roast peppers, corn on the cob, garden herbs, chips	£14.00

Main dishes marked () are served with roast potatoes, carrots, parsnips and salsify*

Desserts

Christmas pudding flambéd in brandy, rum custard	£6.00
Sherry and blackberry jelly, seasonal fruit strudel, Bailey's ice cream	£6.50
Chocolate heaven ~ profiterole scented with clementines, rocky road, white chocolate mousse	£7.50
Coffee or tea	£2.00

Please advise your individual menu selections to: Emma Williams, 2 Mill Lane, Bramley, Guildford GU5 0HW (nd@weyandarun.co.uk) by Friday 20th November. Please state any seating preferences. Cheques payable to "J Morgan" (NOT to Wey & Arun Canal Trust) or e-mail for bank transfer details. Queries should be addressed to Emma Williams (01483 890515 or by e-mail as above).

Christmas Raffle 2015



0001

CHRISTMAS DRAW 2015

1st Prize: £200
2nd Prize: £100 • 3rd Prize: £75
4th Prize: Marks & Spencer token for £50
5th Prize: £40 • 6th Prize: £30

*The draw will take place on Friday 4th December 2015
at The Jolly Farmer, High St, Bramley, Surrey GU5 0HB*

Promoter: Sally Schupke, Bridge End, Somerswey, Shalford, Surrey GU4 8EQ
Registered under The Gambling Act 2005 with Guildford Borough Council. Licence No. SL134
Printed by www.raffleticketsdirect.co.uk

If you would like to buy raffle tickets, please contact the Raffle Organiser, John Taylor-Cram (jtc@weyandarun.co.uk, 02392 250463).

The closing date for buying tickets is 27th November.